



RANGERS
CHARITY
FOUNDATION

ACTIVITY WORKSHEETS

WEEK 11



The Rangers Charity Foundation is delighted to bring you weekly workbooks, bursting with activities to help keep children's minds active in a fun way, whilst we are all staying at home and staying safe.

1. Premier League Wordsearch

To celebrate British football being back on our screens, we're challenging you to find these nine Premier League sides...

C	H	E	L	S	E	A	T	V	L	S	L	N	T
M	W	H	M	N	E	W	L	V	I	L	E	E	O
H	V	L	A	T	E	E	Y	S	V	V	I	W	R
T	T	N	M	R	W	T	T	E	E	R	C	C	T
T	S	T	T	A	I	L	W	T	R	I	E	A	O
R	N	T	T	C	N	D	I	L	P	N	S	S	T
M	M	N	N	C	U	U	A	I	O	R	T	T	T
W	C	A	W	O	M	V	N	I	O	M	E	L	E
O	M	A	C	C	L	I	E	I	L	O	R	E	N
L	E	A	N	C	W	V	E	E	T	M	E	U	H
V	E	V	E	R	T	O	N	A	H	E	L	C	A
E	I	T	M	L	N	O	N	W	T	A	D	R	M
S	H	N	M	O	N	E	V	S	V	E	A	N	I
S	E	Y	O	R	C	S	I	L	D	N	L	R	D

- LIVERPOOL
- MAN CITY
- LEICESTER
- CHELSEA
- MAN UNITED
- WOLVES
- TOTTENHAM
- EVERTON
- NEWCASTLE



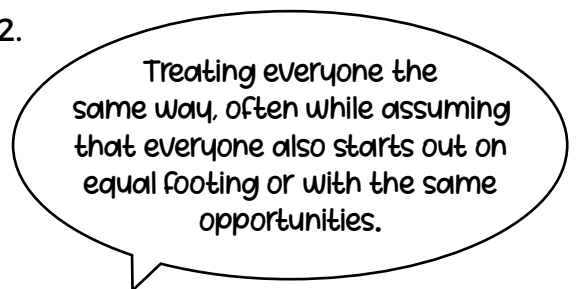
2. Everyone Anyone!

Rangers Football Club and Rangers Charity Foundation are for everyone and anyone! Can you link up these important words to their descriptions below?

1.

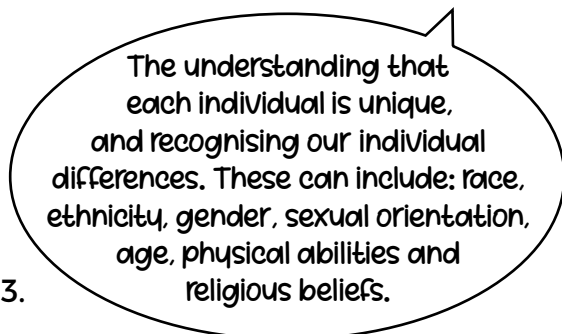


2.



Equality Inclusion Welcoming Diversity

3.

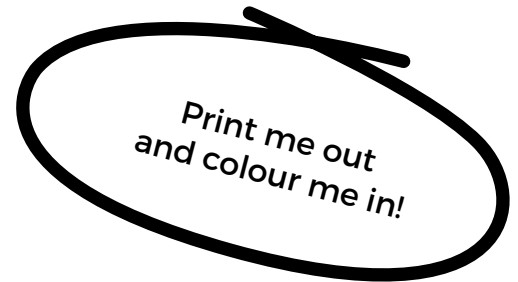


4.

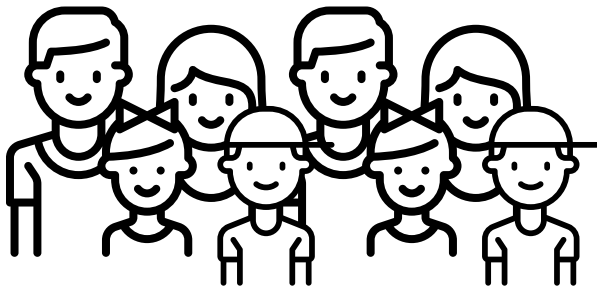


3. Football Figures

Can you test your maths skills in our football-themed numbers test?



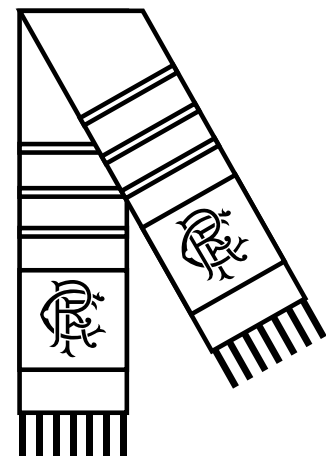
1) If there are 462 fans at a football match and one third of them are children, how many are adults?



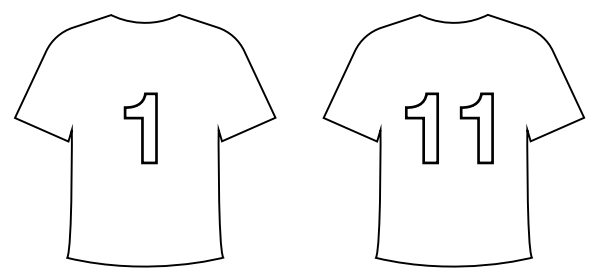
2) If Borna practises eight corners every day, and Tavernier practises 50% more corners every day, how many corners do they both practice in total?



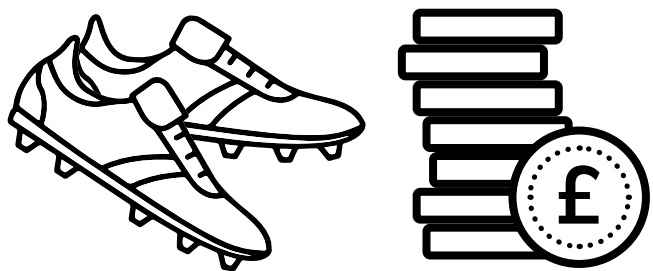
3) In the crowd at a football match, there are 1,746 blue scarves, 764 white scarves and 904 red scarves. How many scarves are there in total?



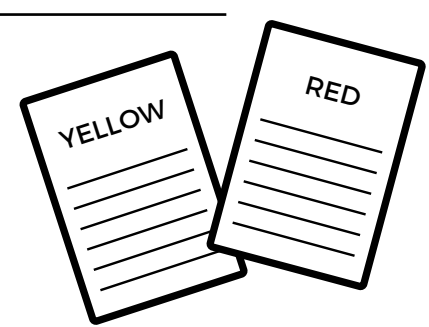
4) If Rangers has 11 players, who are all wearing shirt numbers 1-11, what is the total of the numbers on the shirts?



5) If a fan spent £45.50 on a football shirt, £4.75 on a football and £27.99 on a pair of football boots, how much would they spend in total?



6) If in a football season there were 1,583 fouls and the referees gave a yellow or red card for 536 of them, how many fouls did not get a yellow or red card?



4. Create your own Rangers alphabet

Can you come up with a Rangers Football Club themed word for each letter of the alphabet?

Write your answers below!

A

B

C

D

E

F

G

H

I

J

K

L

M

N

O

P

Q

R

S

T

U

V

W

X

Y

Z

5. Design your own family crest!

Football clubs round the world create a badge to represent their team and its history.

In the space below design a crest or badge for your family. Consider your family values and what is important to you and remember to include a name and your favourite colours. You can also choose any shape you like!

Completed by _____ age _____

We'd love to see your completed worksheets, or images of the family enjoying them! If you'd like, you can share these on social media tagging @RFC_Charity and using #AFoundationFromHome.